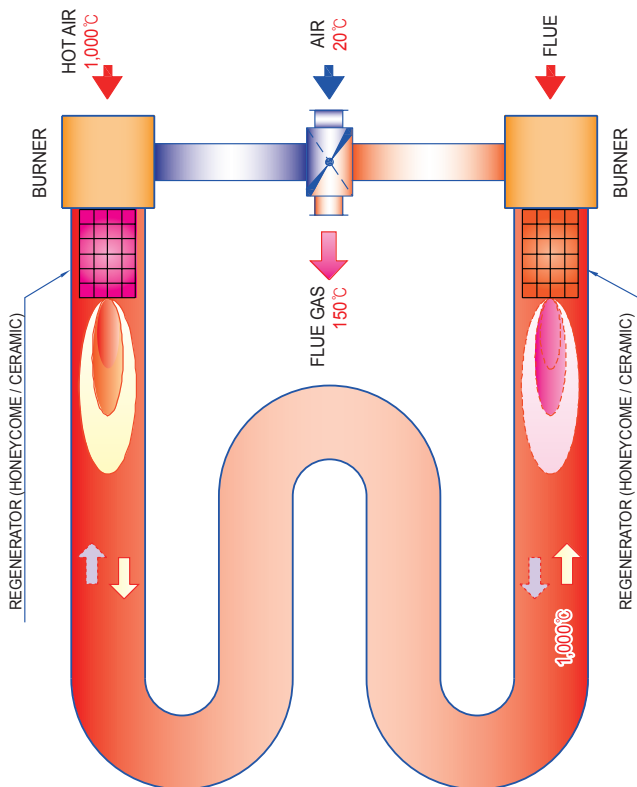


# REGENERATIVE RADIANT TUBE GAS BURNERS

JRB-RT1  
JRB-RT3

JRB-RT2  
JRB-RT4



Alternative Combustion

## FEATURES

- Low NOx type.
- Exceptionally high heat recovery.
- Application temperatures up to 1400°C.
- Advanced, unique design giving simple construction.
- 85% Energy Recovery.

## APPLICATIONS

- High Temperature Heat Treatment Furnaces.
- Carburizing Furnaces.
- Glass Heat Treatment Furnaces.
- Salt Bath Heat Treatment Furnaces.
- Indirect Heating & Drying Furnaces.

# JRB SERIES REGENERATIVE GAS BURNERS INDIRECT FIRED VERSION

## | SPECIFICATIONS |

JSE regenerative burners are available in a range from 46 to 151kW.

Capacity control options are modulating, high/low, on/off and pulse firing.

A special version of the JRB burners is available for radiant tube firing.

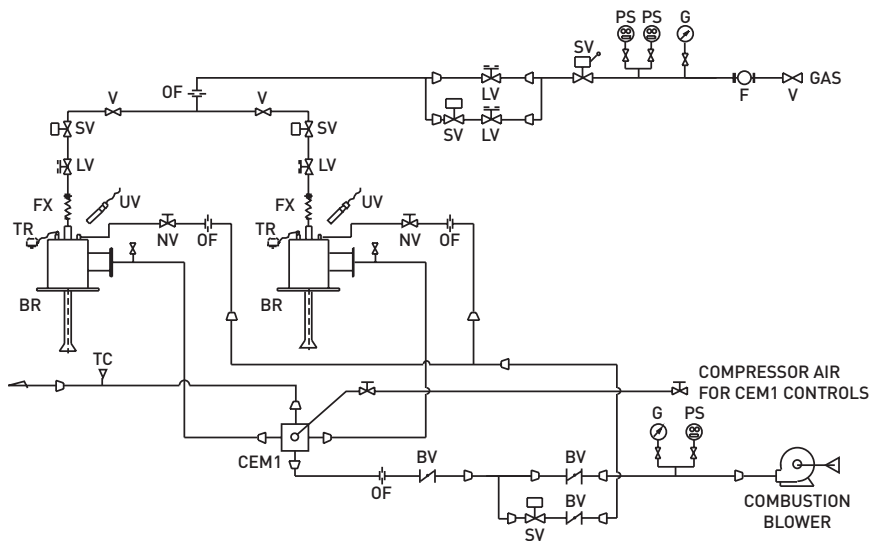
JSE offers a full combustion engineering service for any process, including engineering design, construction, installation and commissioning.

Full technical details can be found in the accompanying data sheets.

## | TECHNICAL DATA |

MODEL	NOMINAL CAPACITY		AIR PRESSURE @15°C (mb)	GAS PRESSURE @15°C (mb)	MAXIMUM CAPACITY	
	(x10 <sup>3</sup> kcal/hr)	(kW)			(x10 <sup>3</sup> kcal/h)	(kW)
JRB-RT1	40	46	150	100	45	52
JRB-RT2	55	63	150	100	60	69
JRB-RT3	86	99	150	100	90	104
JRB-RT4	120	139	150	100	130	151

## | BURNER FLOW SHEET |



4	SV3	SOL. V/V	4	LV2	GAS LIMITING V/V	2	BV1	BUTTERFLY V/V	2	TC1	THREMO COUPLE
1	SV2	SOL. V/V	2	LV1	GAS LIMITING V/V	1	PS2	PRESSURE SWITCH	2	CEM1	SWITCHING VALVE
1	SV1	MAIN GAS SHUT OFF. V/V	2	OF3	AIR ORIFICE METER	2	PS1	PRESSURE SWITCH	4	FX1	FLEXIBLE TUBE
1	R1	REGULATOR	4	OF2	AIR ORIFICE METER	1	G2	PRESSURE GAUGE	4	UV1	ULTRA VISION
1	F	GAS FILTER	2	OF1	GAS ORIFICE METER	1	G1	PRESSURE GAUGE	4	TR1	I.G TRANSFORMER
4	BR	GAS BURNER	1	SV4	SOL. V/V	4	NV1	AIR NEEDLE VALVE	2	BV2	BUTTERFLY V/V
Q'ty	No	NAME	Q'ty	No	NAME	Q'ty	No	NAME	Q'ty	No	NAME