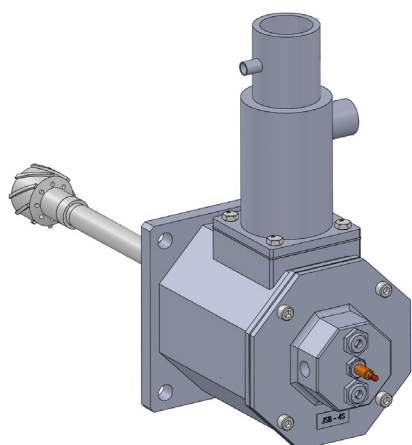


SINGLE END RADIANT TUBE GAS BURNERS

JSB-4S

JSB-5S

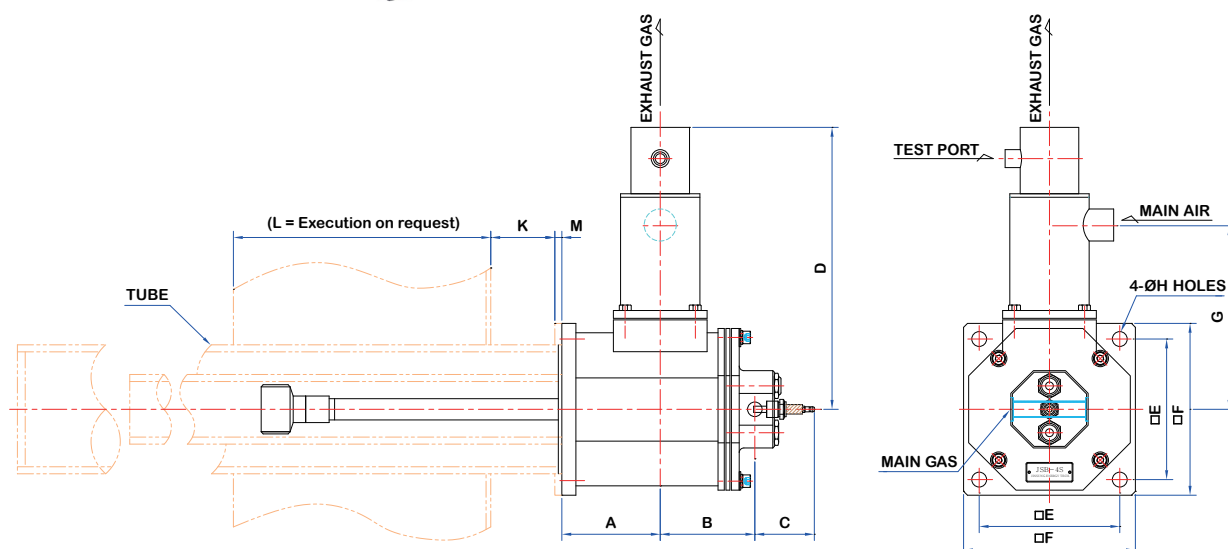


| GENERAL INFORMATIONS |

It is easy to install for this equipment this can be applied to more various purpose and has a merit of energy saving. You can easily replace the burner and burner tube.

| FUEL |

- Natural Gas
- LPG
- Other gaseous fuel



| SPECIFICATIONS |

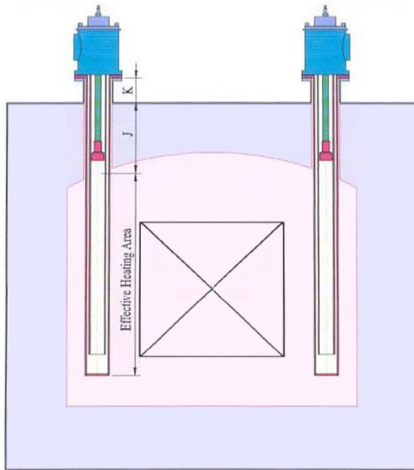
MODEL	TUBE	MAX. CAPACITY kcal/hr (kW)	CONNECTION				A	B	C	D	E	F	G	H	K	M
			Gas	Air	Exh.	Etc.										
JSB-4S	100A	Max.20,000 (25)	15A	25A	50A	15A	126	114	77	361	180	220	235	19	110	15
JSB-5S	125A	Max.25,000 (30)														

Standard Supply Pressure : Gas 500~700mbar

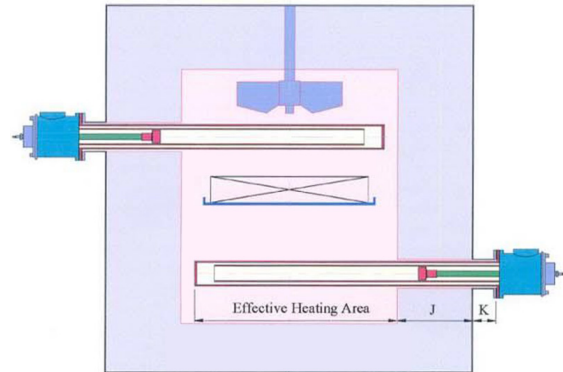
Air 700~800mbar

Ignition Method : Direct Ignition by ignition Plug

| INSTALLATION EXAMPLES |

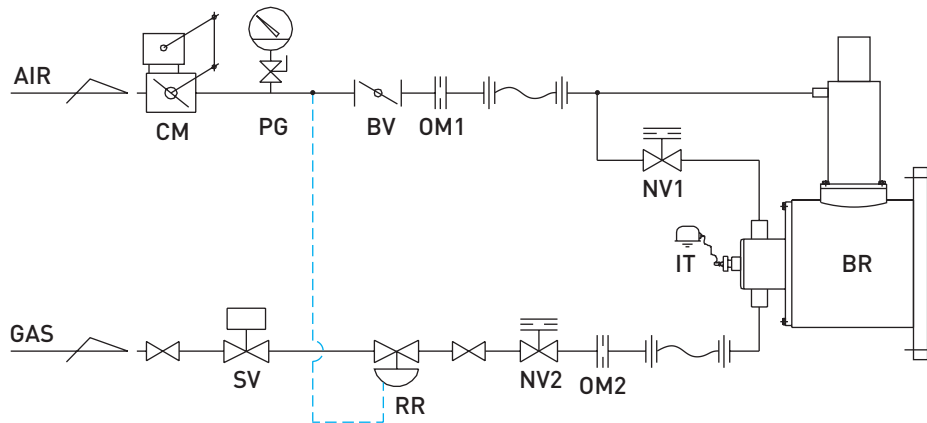


Batch Carburizing Furnace



Mesh Belt Furnace

| FLOW DIAGRAM |



Air Line		Gas Line	
CM	Control Motor w/Valve	SV	Solenoid Valve
PG	Pressure Gauge	RR	Ratio Regulator
BV	Butterfly Valve	NV1	Needle Valve
OM1	Orifice Meter	NV2	Needle Valve
NV1	Needle Valve	OM2	Orifice Meter
BR	JSB Burner	IT	Ignition Transformer